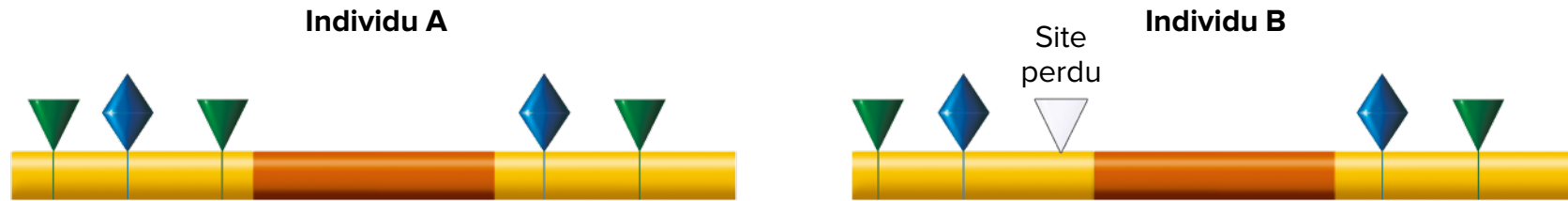
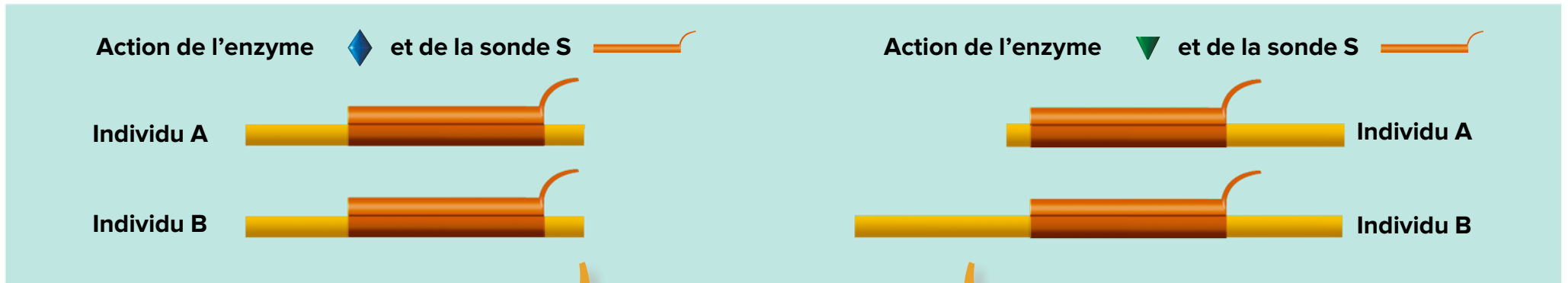






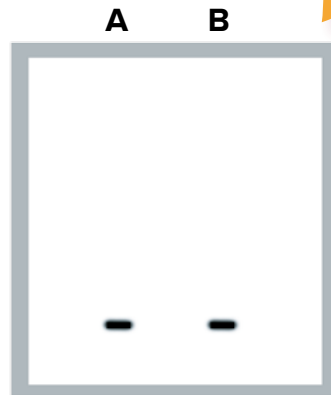
# Les marqueurs RFLP



## Digestion et hybridation



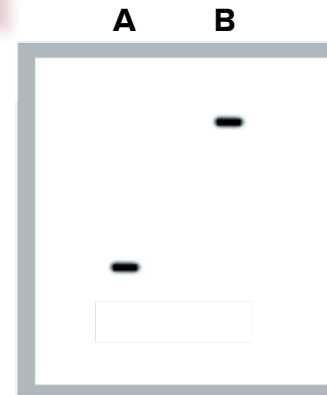
-  Site d'hybridation
-  Sites de coupure d'enzymes de restriction
- 
-  Sonde S



**Révélation**

**Locus monomorphe**

Pas de polymorphisme mis en évidence



**Locus polymorphe**

Polymorphisme de sites de restriction

**Couple enzyme / sonde ⇒ Marqueur RFLP**